

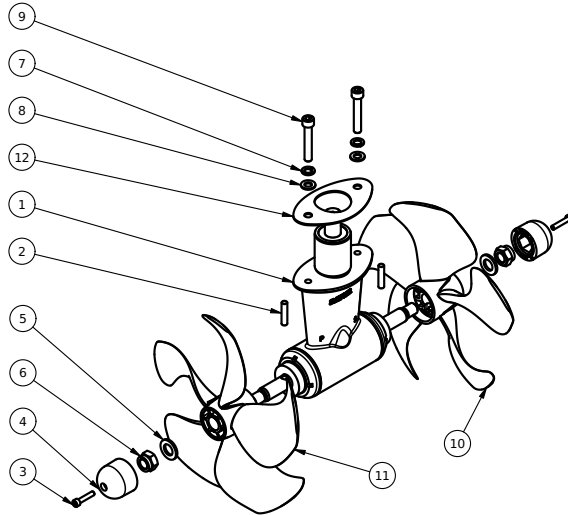
20 0602

Complete gearleg SE250/300/SH320

Spare parts (valid from 2022-04-22)



SLEIPNER



#	Quantity	Name	Item Code	Description
1	1.00	Gearhousing		Gearhousing
2	2.00	Drive pin		Drive pin Ø8x37mm
3	2.00	Bolt		DIN 912 - M6 x 30
4	2.00	Anode	10 9998	Alu anode for SE130/170/SP240/285
5	2.00	Washer		DIN 125 - A 17
6	2.00	Nut		DIN 985 - M16x2
7	2.00	Washer		DIN 128 - A10
8	2.00	Washer		DIN 125 - A 10,5
9	2.00	Bolt		DIN 912 - M10 x 60
10	1.00	Propeller	SM-130945	Thruster propeller SE300,Q/RH prop
11	1.00	Propeller	SM-130943	Thruster propeller SE300,Q/LH prop
12	1.00	Gasket	20 1312	Gasket for gearleg installation in tunnel, SP220

The installer alone has responsibility for the installation of the spare parts. Side-Power only warranty the spare parts supplied only.

The information given in the document was correct at the time it was published. However, Sleipner Motor AS can not accept liability for any inaccuracies or omissions it may contain. Continuous product improvement may change the product specifications without notice. Therefore, Sleipner Motor AS can not accept liability for any possible differences between product and document.