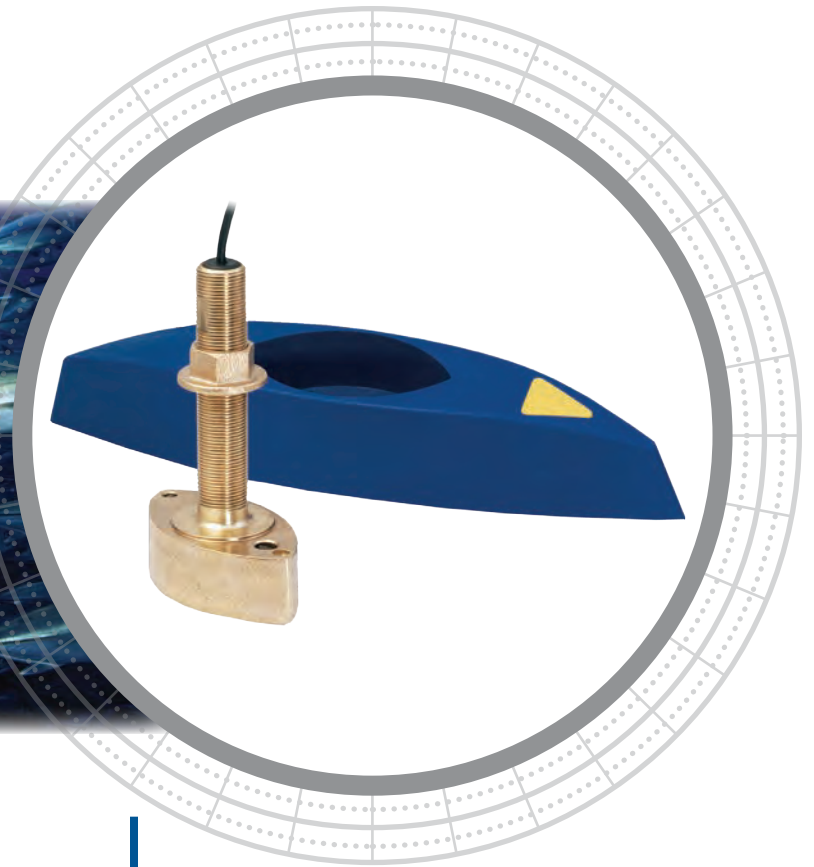


# B45



## Compact and Budget-Minded!

The B45 is Airmar's smallest, bronze, thru-hull stem, offering quality design at an economical price. The classic housing is streamlined to deflect aerated water from the transducer's face, providing solid echo returns.

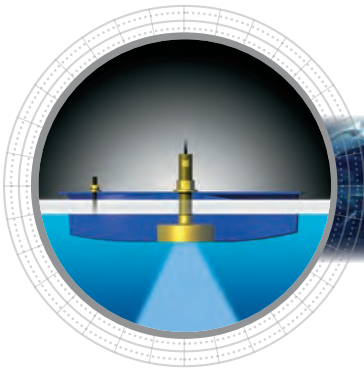
## Quality Performance Results

Get the most out of a transducer installation. See defined return echoes and clean crisp images. Utilizing Airmar's High-Performance Fairing will boost echosounder performance and provide optimal results for all installations.

## Thru-Hull 600 W

### Features

- Recommended for planing-hull powerboats and cruising sailboats up to 9 m (30')
- Good sensitivity in a compact housing
- Fast-response water-temperature sensor provides  $\pm 0.2^{\circ}\text{C}$  ( $\pm 0.1^{\circ}\text{F}$ ) accuracy



## Technical Information

### 50/200 kHz-A

<b>Number of Elements and Configuration</b>	○	
<b>Beamwidth (@-3 dB)</b>	45°	12°
<b>RMS Power (W)</b>	600 W	600 W
<b>TVR</b>	155 dB	164 dB
<b>RVR</b>	-174 dB	-184 dB
<b>FOM</b>	-31 dB	-21 dB
<b>Q</b>	28	31
<b>Impedance</b>	200 Ω	375 Ω

### MAXIMUM DEPTH RANGE

50 kHz	200 kHz
235 m to 353 m (800' to 1,200')	118 m to 206 m (400' to 700')

### BEAM DIAMETER VS DEPTH

Depth	50 kHz	200 kHz
9 m (30')	8 m (25')	2 m (6')
30 m (100')	25 m (83')	6 m (21')
122 m (400')	101 m (331')	26 m (84')
305 m (1,000')	252 m (828')	64 m (210')

### TRANSDUCER COMPARISON

Model	Power	Rating	Performance Increase
<b>B45</b> B744V B744VL	<b>600 W</b>	<b>Good</b>	<b>Benchmark model for comparison</b>
B258	1 kW	Better	25 times more sensitive at 50 kHz 16 times more sensitive at 200 kHz
B260 SS260	1 kW	Best	50 times more sensitive at 50 kHz 13 times more sensitive at 200 kHz
R99	2 kW	Superb	200 times more sensitive at 50 kHz 32 times more sensitive at 200 kHz
R209 R309	3 kW	Ultimate	400 times more sensitive at 50 kHz 32 times more sensitive at 200 kHz

Due to the wide beam of the SS270W, it has been omitted from the table.

### SPECIFICATIONS

**Weight:** 2.5 kg (5.5 lb)  
**Hull Deadrise:** Up to 26° with fairing  
**Acoustic Window:** Urethane

### DIMENSIONS

